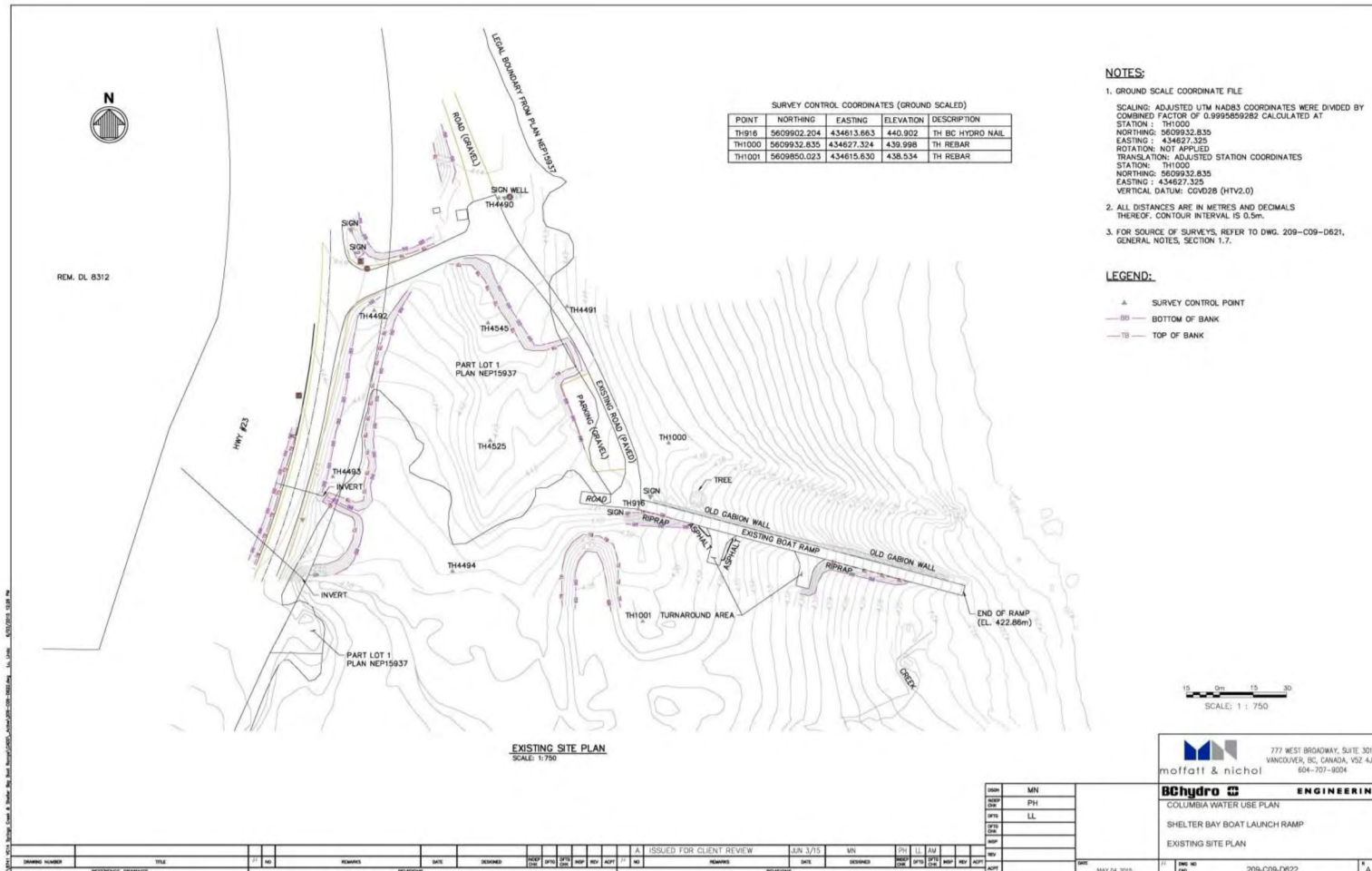
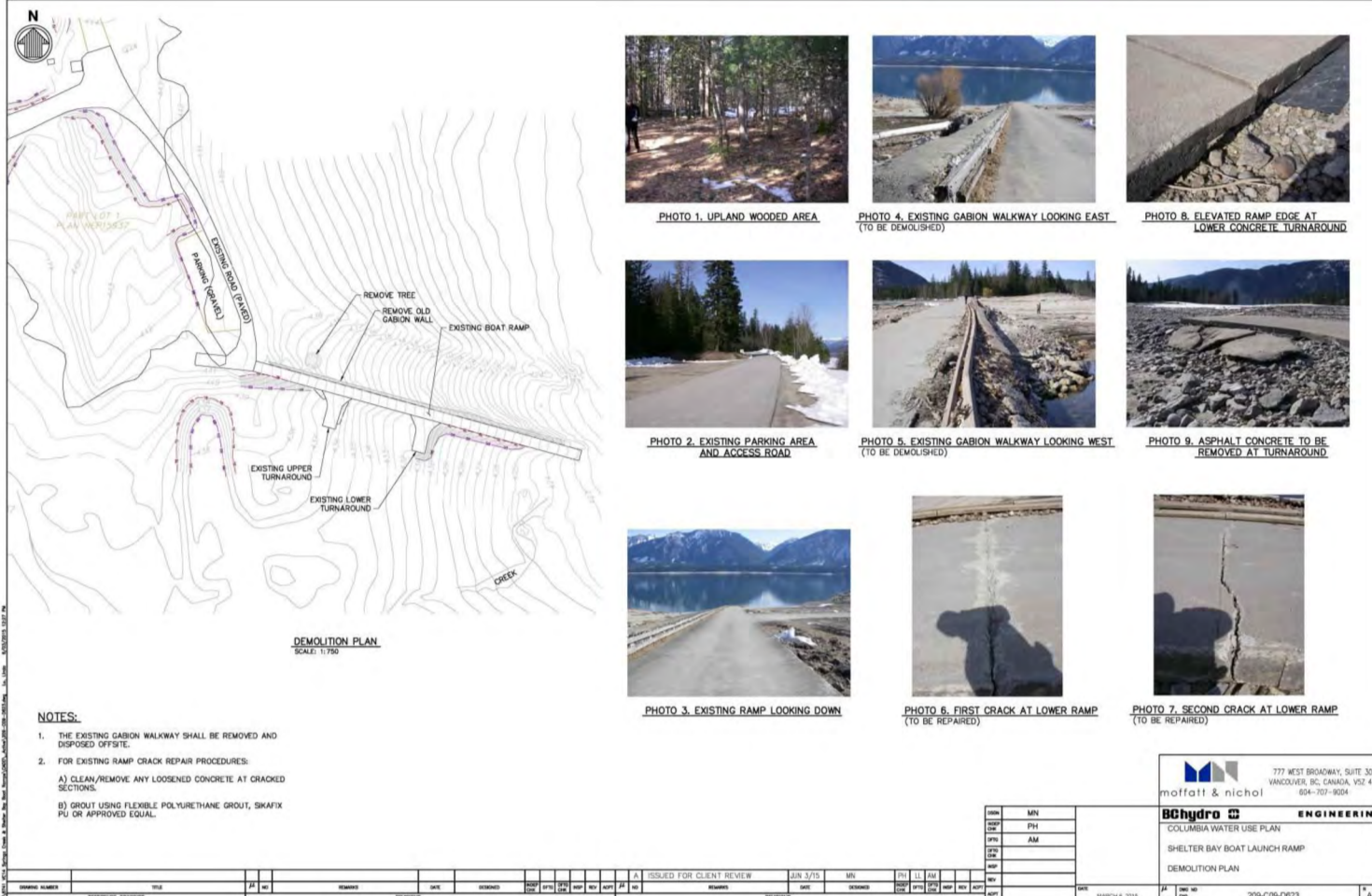


EXISTING SITE PLAN



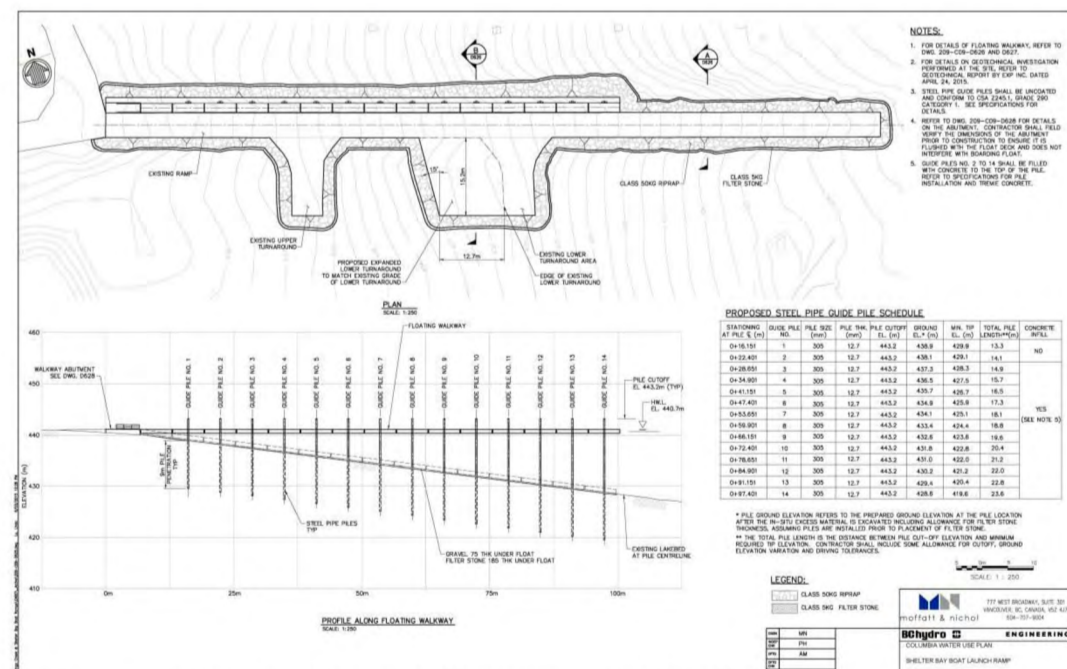
DEMOLITION PLAN



BOAT LAUNCH IMPROVEMENT PLAN



FLOATING WALKWAY



Pilings on floating walkway. McDonald Creek boat launch.



Floating walkway. McDonald Creek boat launch.



BC Hydro is committed to improving summer recreational boat access in Arrow Lakes Reservoir as directed by the Provincial Comptroller of Water Rights and as recommended by the Columbia River Water Use Plan.

SHELTER BAY BOAT LAUNCH IMPROVEMENTS

Upland Improvements

- Construction of 70 m x 44 m parking area to accommodate 32 vehicles and trailers.
- Design existing road and new parking area to accommodate clockwise circulatory one-way traffic to help reduce congestion at the top of the ramp and along existing access road.

Boat Ramp Improvements

- Expand lower turnaround from 6 m to 18.7 m.
- Replace existing gabion walkway with a floating walkway.
- Replace existing breakwater.
- Rip rap installed to prevent further erosion along edges of ramp.
- Repair damaged ramp sections.

