

First World War Internment Camp

Mount Revelstoke National Park
1915

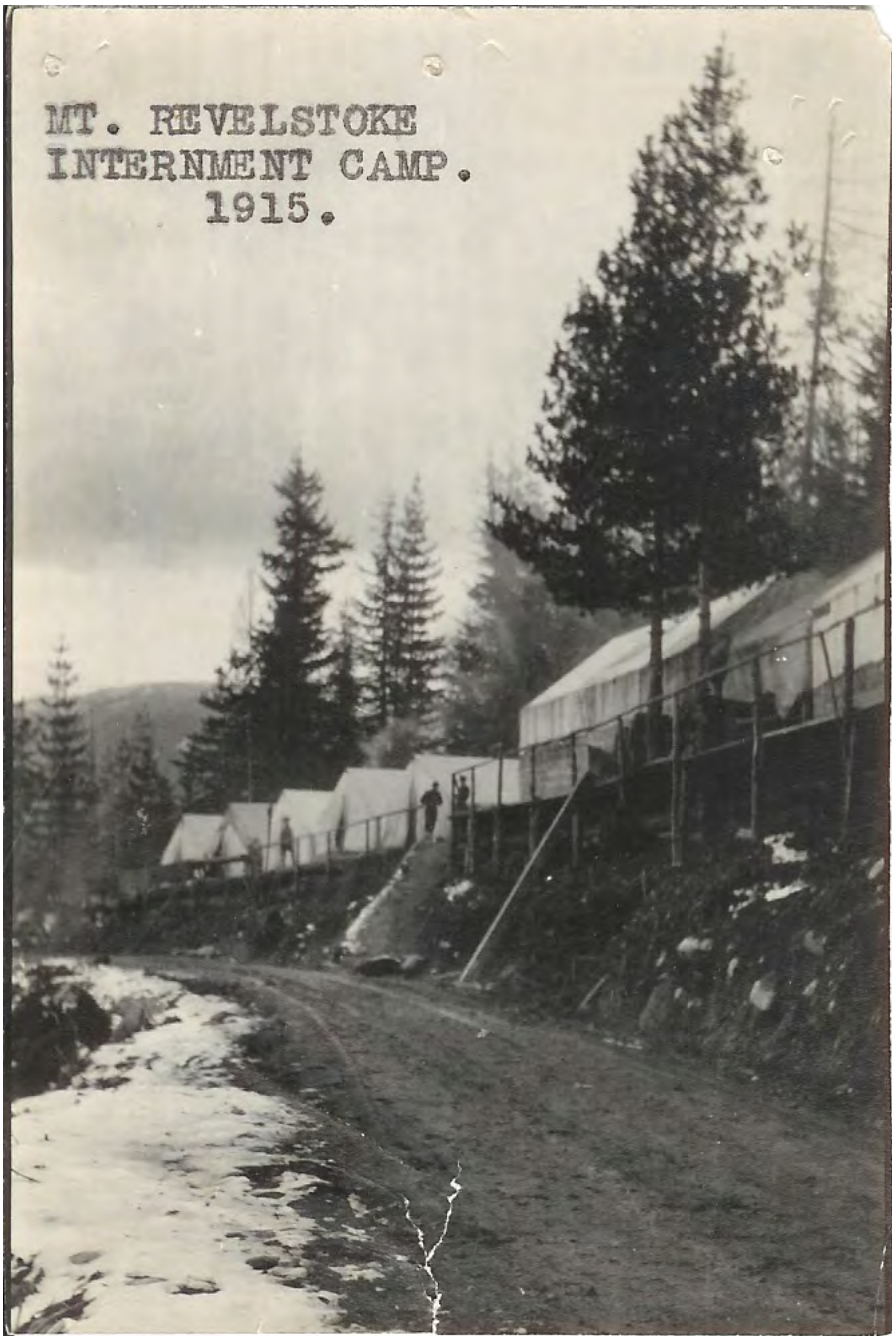
From 1914 to 1920, a total of 8,579 male prisoners were interned in 27 camps across Canada, many of them in National Parks

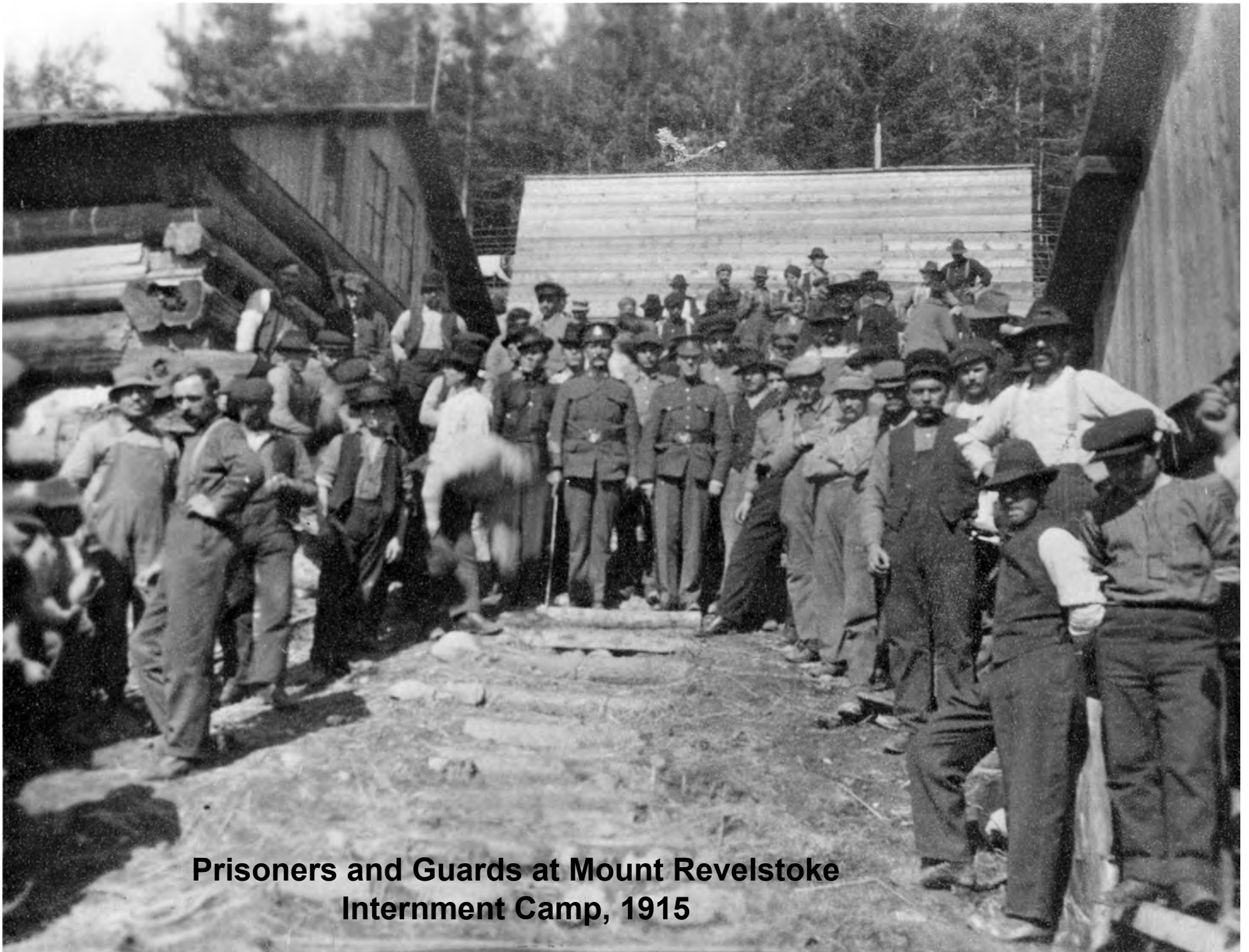
Austro-Hungarians (Ukrainians, Croats, Slovaks & Czechs)	5,964
Bulgarians	99
Germans	2,009
Turks	205
Miscellaneous	312

Of the total interned not more than 3,138 could be correctly classed as prisoners of war.

From September to December of 1915, up to 200 prisoners were detained at a camp on Mount Revelstoke, along with 75 guards.

MT. REVELSTOKE
INTERNMENT CAMP.
1915.





**Prisoners and Guards at Mount Revelstoke
Internment Camp, 1915**



**Guard at Mount
Revelstoke
Internment
Camp**