

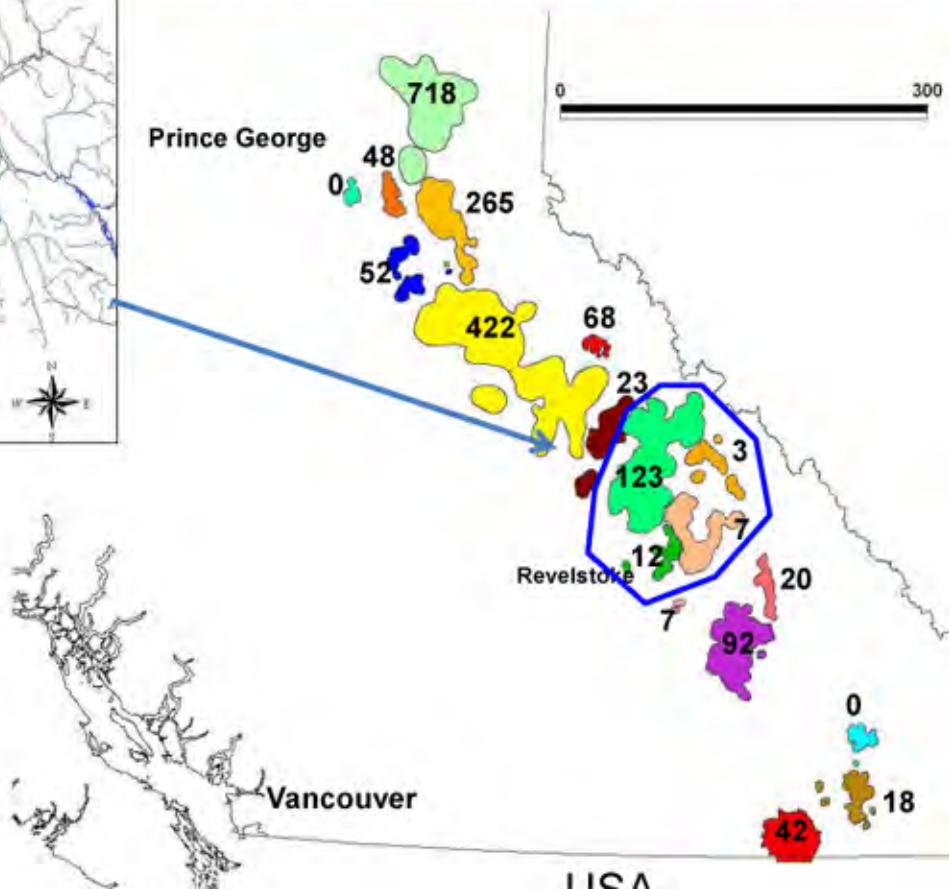


The Revelstoke Caribou Rearing in the Wild Project (RCRW)

Agenda:

- Update on caribou numbers in Revelstoke
- Background on caribou decline
- What is being done?
- Who is RCRW?
- What is caribou rearing in the wild and why are we proposing it?

Mountain Caribou 2011 Estimates



Why are caribou declining?

Caribou Habitat loss

- Logging, hydro, development (fires, settlement, roads), intense disturbance, climate change.

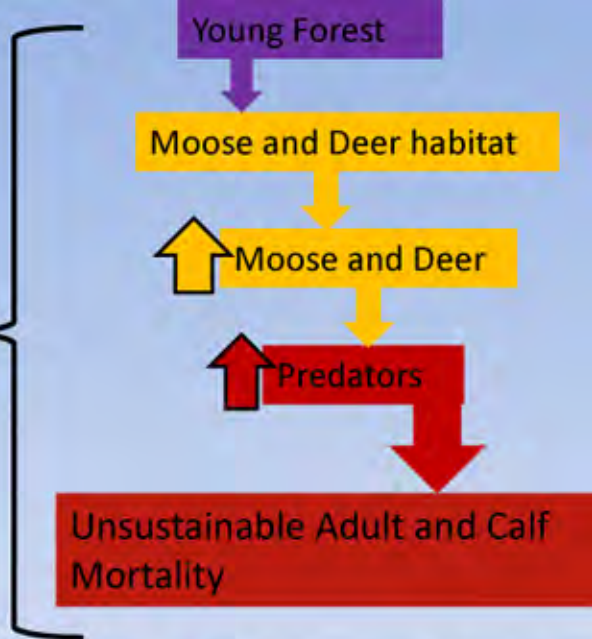
Altered predator prey dynamics

Disturbance

- Recreation
- Historic (no longer) hunting pressure

Small Populations

- Subject to random events
- Slow recovery



Calf Recruitment

Currently the percent of the population in march consisting of calves is 9-13% Below the approximate 15% required for population stability (to balance female mortality). In contrast, the percent of the population in march that were calves was around 20% in the 1980's and early 1990's.



What is being done so far?

Reserve of Old Growth Habitat

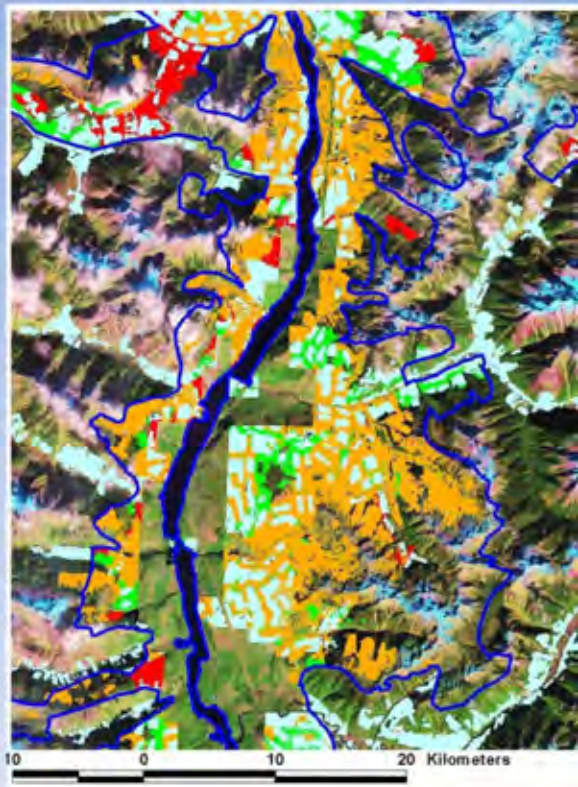
Managing with hunting to reduce moose

Translocation to Purcells

Captive Rearing is being considered

Recreational Closures (snowmobiles, ski touring)

Best Management Practices for Heli Skiing



What is caribou rearing in the wild?

Goal –

To Improve survivorship of calves and females by providing protection after birth by holding them in a predator proof enclosure.



Methodology -

- Capture pregnant female adults in late March/early April and transport to a predator-proof enclosure site.
- Release caribou directly from enclosure 2+ weeks after last calf is born.
- Monitor calves and adults using radio-telemetry flights.

Revelstoke Caribou Rearing in the Wild !

Who: A group of individuals and organizations committed to the recovery of caribou in the Revelstoke area.

Goal: Fundraise, plan and conduct a captive rearing in the wild project for southern mountain caribou near Revelstoke

Currently the organization is:

- Revelstoke Community Forestry Corp.
- North Columbia Environmental Society
- Columbia Mountains Caribou Research Project
- Revelstoke Snowmobile Society
- Province of BC
- Parks Canada

We are actively pursuing First Nations Involvement

Momentum and Enthusiasm is HIGH!



Making progress.....

- The membership has been established. Documents for funding applications in place.
- Presentations to stakeholders. Letters of support from CMH, K3 Catskiing, Mustang Powder, Mica Heli, BC, Eagle Pass, City of Revelstoke....still coming in.
- City of Revelstoke has agreed to administer funds for no charge
- Application to non-government funding agencies is in progress. No bites yet – but lots of positive feedback.
- Looking for support and participation from First Nations – letters sent out.
- Site selection, interim agreement and land use permits established.
- Forestry Fire Crews have thinned and brushed the 4 ha of the site (66 man days of work!).
- Science Meeting with prominent caribou biologists to determine best research plan for monitoring outcomes, and minimizing cost and impact. Estimates in place.
- Preliminary Budget in Place. In-kind support committed.
- BC Provincial Wildlife veterinary program support confirmed and she will help with protocols

Chisana Caribou Herd Recovery Project
&
Captive Rearing Experiment





**Build a Temporary Fence Made
of Geocloth & Protect with
Electric Fencing**

A young girl with long, wavy brown hair is wearing a large, elaborate crown made of various types of lichen. The crown is primarily composed of bright yellow-green and white lichen, with some darker, brownish-green lichen interspersed. She is wearing a purple jacket with a pattern of small white spots. The background is a blurred landscape of autumn trees in shades of orange, red, and brown, with a blue sky and mountains visible in the distance.

Collect Lichen



Animals are captured from a helicopter.

Quickly Loaded and Transferred to the Pen



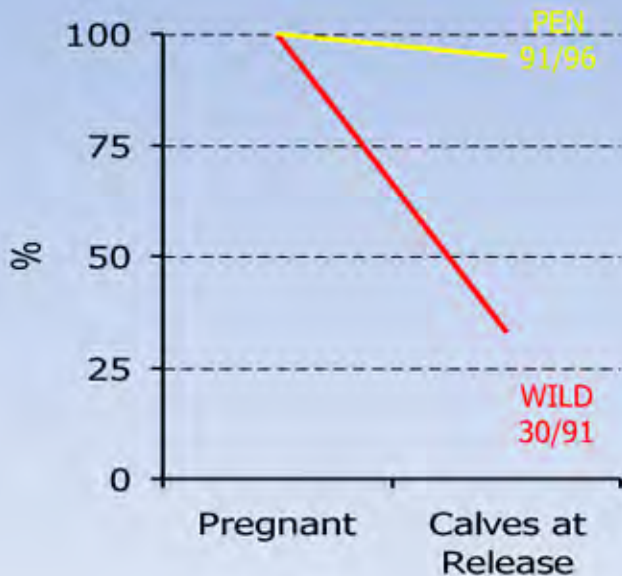
Round the Clock Surveillance





**They Are Released in Mid-July When the Last Calf Born is at Least
Four to Six Weeks Old**

Initial Survival (Birth to Release)
of Pen and Wild-born Calves
Chisana Caribou Herd 2003-05



2003, 2004, 2005 POOLED

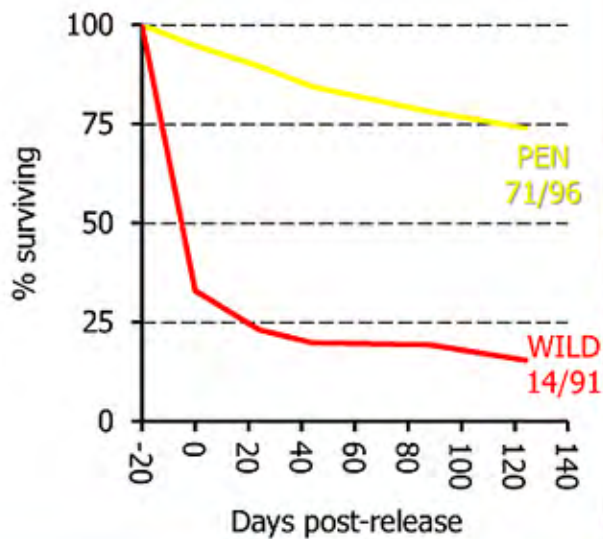
PEN 95%

VS.

WILD 33%

($\chi^2 = 78.19, 1df, P < 0.001$)

Survival of Pen and Wild-born Calves
Chisana Caribou Herd 2003-05



2003, 2004, 2005 POOLED

PEN 74%

VS.

WILD 15%

($\chi^2 = 64.65, 1df, P < 0.001$)



The proposed site....now with better sight lines!

- flat, good sight lines
- close proximity to known calving grounds
- good aircraft landing site
- isolated but good access
- Infrastructure available to reduce costs



03/05/2012 09:56

